

**Jack Venrick**

**From:** "Jack Venrick" <jacksranch@skynetbb.com>  
**To:** "Jack Venrick" <jacksranch@skynetbb.com>  
**Sent:** Thursday, August 16, 2007 10:32 AM  
**Attach:** WADOTRoundaboutFlyer0002.jpg; WADOT415thSR169Control0001.jpg; WADOTRoundaboutFlyer0001.jpg; NO Roundabout or Light at SR 169 & SE 416th St Intersection .eml  
**Subject:** Fw: One Engineer's View or How I See The DOT

----- Original Message -----

**From:** Jack Venrick  
**To:** jacksranch@skynetbb.com  
**Sent:** Saturday, April 28, 2007 1:46 PM  
**Subject:** One Engineer's View or How I See The DOT

**To: Property Owners, Government Types, Media & Freedom Movement**

**SR 169/SE 416th St. Intersection Improvements**  
www.wadot.wa.gov/projects/sr169/se416thintersection

**2007 Project Update**  
We are exploring improvement options on SR 169 at SE 416th Street, just north of Enumclaw. These improvements include a signalized intersection and a modern roundabout. Construction is expected to begin in late 2008.

**Roundabouts:**  
**Improve Safety**  
A study by the Insurance Institute for Highway Safety found that roundabouts reduce injury collisions by 76 percent and fatal or incapacitating injury collisions by 90 percent.

**Reduce Delay**  
Roundabouts improve traffic flow because vehicles are constantly moving. It will eliminate delays caused by drivers waiting to turn left on SR 169 to SE 416th Street.

**Reduce Costs**  
Roundabouts eliminate maintenance and electricity costs approximately \$5,000 per year, per intersection.



**MAKING EVERY DOLLAR COUNT.**

Intersection Type	Change in Total Crashes with Roundabouts Installed	Change in Severe Injury Accidents after Roundabouts Installed
All Intersections	20% Reduction	20% Reduction
Roundabout at SR 169/SE 416th St.	20% Reduction	20% Reduction

The project is funded by the 2005 Transportation Tax Package.

The plan is inspired by the activities of the National Cooperative Highway Research Program and Texas Cooperative Research Program of the Transportation Research Board.






Washington State has sprung a plan to install a European style "roundabout" on the rural road Ave SE and SR 169, the Enumclaw - Renton route. The intersection borders 3 farms and a gas & market store. This is 1 mile from my land.

- You can check out the DOT marketing above and my first letter to DOT
- The first step in responding, is to consider the source, i.e. WA State DOT. You can check the DOT's arrogant history at this site <http://www.effwa.org/main/search.php>. The DOT is one of the most political and abused groups in the State, thereby corrupted.
- The next step is to look at what they don't tell you. Who is really behind this million dollar European rural obstruction plan, e.g. sustaining development, smart growth, UN Agenda 21, Seattle based environmental extreme groups, etc. This plan smacks of urban planning nonsense.
- You will notice their first reason is safety and they quote 14 accidents in 5 years. We have accidents all over Enumclaw plateau because drivers like to run stop signs and lights when they can. We have crosses on many intersections where there have been fatalities. So does that mean we install stop lights and stop signs at every

intersection on the plateau?

- If Auburn City government was running the show, they would also add cameras to photograph your license plates. King County DDES has a program now to encouraging neighbors to rat on other neighbors.
- King County, State and Federal BIA allowed and encouraged a 20,000 seat amphitheater on private property the plateau that messes up traffic 40 times a year.
- King County spends taxpayers money buying up dairy farms so they can't use their property for  
Then the milk prices plummet and the dairy goes out of business and the land is useless. Half the farm is sold and both halves cannot sustain any business. It is useless land now. However, would you be surprised, it is prime development land worth a fortune in the free market. Incredible views but it is State owned or at least controlled now at the tax payers expense forever.
- A smart tax payer will note how long and how much effort the State has spent to set the idea up vs. coming to first, i.e. the agenda.
- The government agenda is often different from what they say. e.g. We learned from King County regarding CAO is they set up what they want to do and then they stage a mock public meeting giving you 2 minutes and call it good to go. i.e. King County had no intention of stopping the illegitimate CAO based on unpopularity it with the rural community. The CAO was all Seattle based environmental liberal extremism to shove it our throats.
- You will notice we do are told how many people and who are asking for this European roundabout in the of farm land.
- Will we be shown all comments submitted with a tally including the property address from the local area the intersection?
- Will the local neighboring farms to this intersection have more weight on the decision?
- Funny how the State can come up with money for marginal improvements while we have major problems elsewhere. The State Fish and Game installed a \$100,000 concrete fish bunker on a near by intersection, & 424th. There was no need for that. That intersection has several crosses on and near it from drive through fatalities. Never mind the people, normal culverts are not good enough for the fish, give em concrete.
- The intersection of 416th and 244th has ditch water over flow during the winter high rain high water table King County will not touch the ditches that need to be clean out so the adjoining land can drain
- The State does not tell you the reason we have traffic accidents & problems on 416th & SR169 is because the City of Enumclaw decided to eminent domain half of the Rainier Stables farm and build a middle school on ST 169 just a few blocks south of this intersection.
- 14 accidents over the last 5 years corresponds to this new middle school construction. It was a terrible choice location. Whoever heard of placing a grade school directly on a State Route highway going to a major ski (Crystal Mountain) and national park(Rainier)? Once again we see the law of cascading unintended

consequences caused by government. If government touches gold, it turns to worthless fiat money.

- Don't get me wrong, I love Enumclaw, it is my home town in King Communist County, close to my little 10 acre paradise .
- Don't forget the rural farmers here cannot use their land and/or have limited use because of the illegitimate CAO & GMA & the failure of the Property Fairness Initiative (42% /58% ). i.e. mostly Seattle vote turned it down based on lying & cheating.
- Can you see the picture? The government pushes its bloated self all over everyone out here against their
- I speculate, based on prior experiences, that the decision has already been made on this cute little impractical European intersection.
- Washington State and King County are no friends of the rural property owners, in fact they are our worst enemies.
- A million dollar urban type intersection for a rural farm area is not the solution here.
- The State, King County and Enumclaw government are all of a sudden concerned about safety because they realize the Enumclaw Thunder Mountain Middle School was a very foolish location to build a grade school. State Route and grade school kids do not mix well.
- The answer here is to reroute SR169 around Enumclaw and this school. We have three major State Route through the little town of Enumclaw. This is insane. All three routes need to go around the town not through it. This would solve most of the safety problems.
- This proposed fix is a band aid.
- A better band aid fix until all three State Routes can be rerouted around Enumclaw is the following. Add a center turn land on SR169 so traffic coming from 416th can more easily get on. Also add exit turn lanes and south bound SR169 onto 416th so people can get off easier without slowing everybody else down. No maintenance, no lights, perhaps less land to take?
- The government does everything upside down and backwards because they have no common sense just government sense which is nonsense.
- How many traffic injuries and deaths in the State and King County compared to this one intersection on farm land? There are so many other traffic priorities beyond this one intersection.

Lastly, I would like to leave you with this picture and thought. Ask yourself why the State has raised the seat belt and even why their is a seat belt law. The answer we have come up with is to generate more money. Americans to start understanding that the government no longer and never was our friend. The laws are not made to protect they are made to protect the government and generate more for them and less for us. Ever piece of legislation in Olympia takes away our freedoms. They are mostly political correct takings of no use to any independent loving person.

If the government could legislate a cure for death, they would do it, not for you, but to tax you to death.



Jack Venrick

Why do we need another " roundabout"

When we have the Mother of all " roundabouts"

In Olympia WA &

King Communist County

# SR 169/SE 416th St. Intersection Improvements

[www.wsdot.wa.gov/projects/sr169/416thIntersection](http://www.wsdot.wa.gov/projects/sr169/416thIntersection)

## 2007 Project Update

We are exploring improvement options on SR 169 at SE 416th Street, just north of Enumerlow. These improvements include a signalized intersection and a modern roundabout. Construction is expected to begin in late 2009.

### Roundabouts:

#### Improve Safety

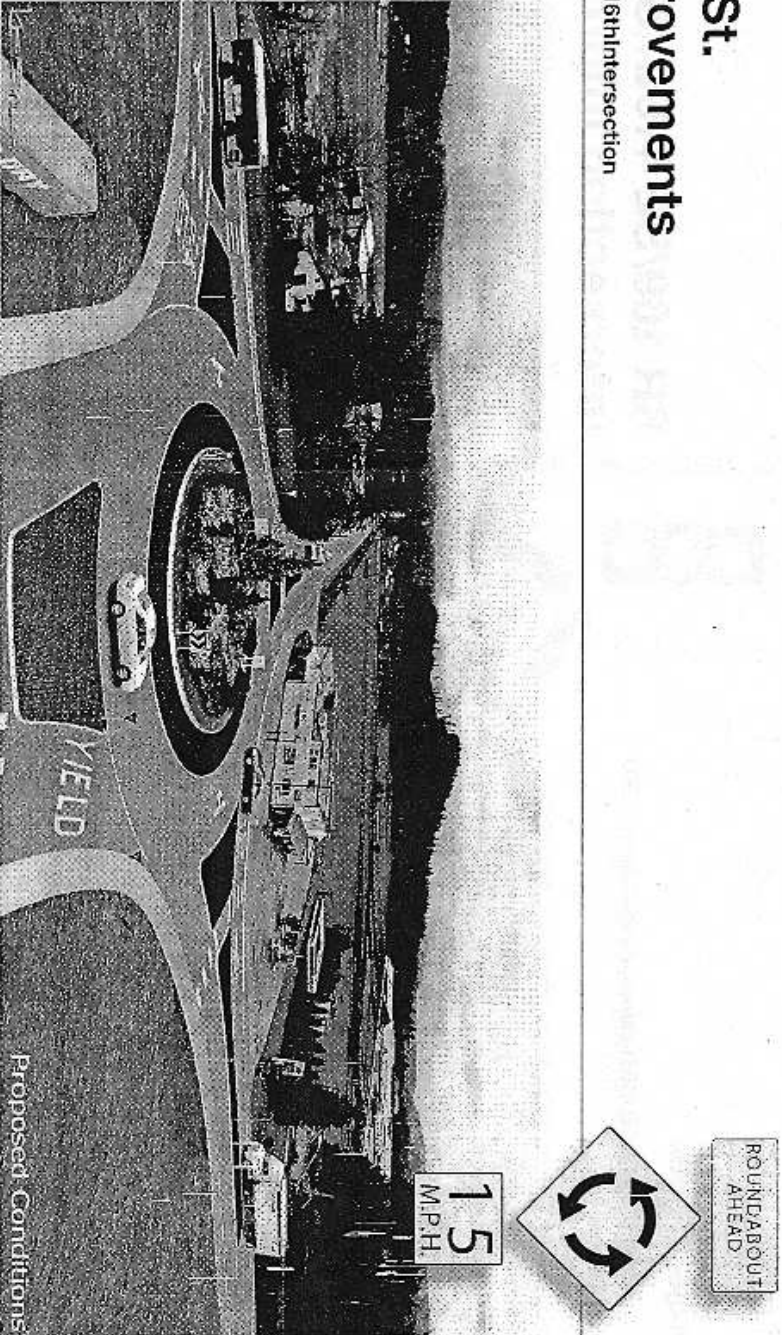
A study by the Insurance Institute for Highway Safety found that roundabouts reduce injury collisions by 76 percent and fatal or incapacitating injury collisions by 90 percent.

#### Reduce Delay

Roundabouts improve traffic flow because vehicles are constantly moving. It will eliminate delays caused by drivers waiting to turn left on SR 169 to SE 416th Street.

#### Reduce Costs

Roundabouts eliminate maintenance and electricity costs approximately \$3,000 per year, per intersection.



Intersection Type	Change in Total Crashes after Roundabout Installed	Change in Severe Injury Accidents after Roundabout Installed
All Intersections	35% reduction	76% reduction
Two-Way Stop Rural	29% reduction	81% reduction

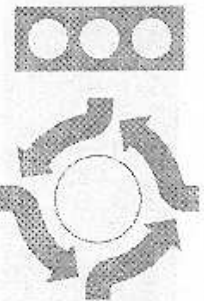
This was prepared under the guidance of the National Cooperative Highway Research Program and Transit Cooperative Research Program of the Transportation Research Board.

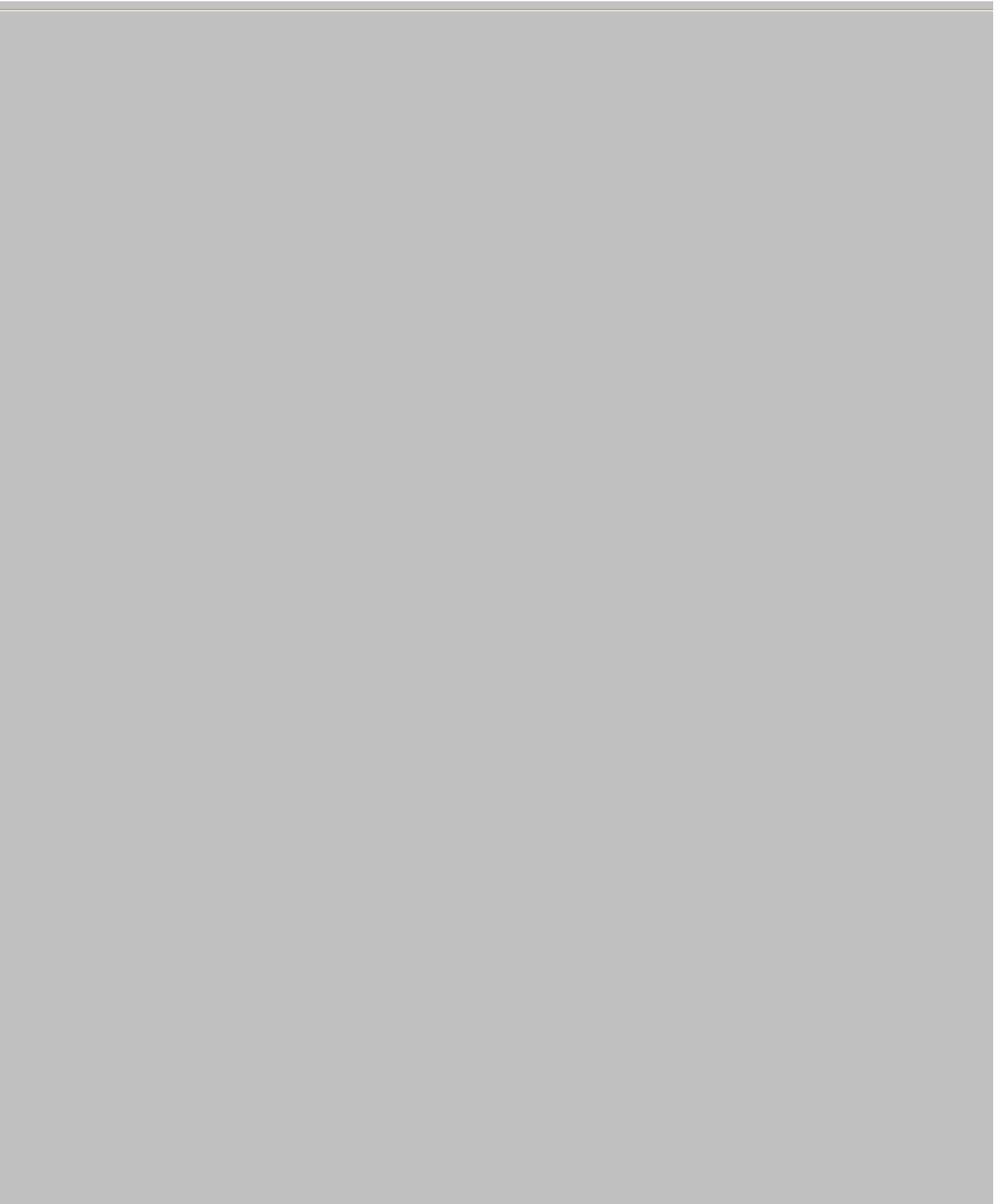
**MAKING EVERY DOLLAR COUNT.**

This project is funded by the 2005 Transportation Tax Package



Washington State  
Department of Transportation







# 416th St. Intersection Project

## Learn More about Proposed Intersection Improvements

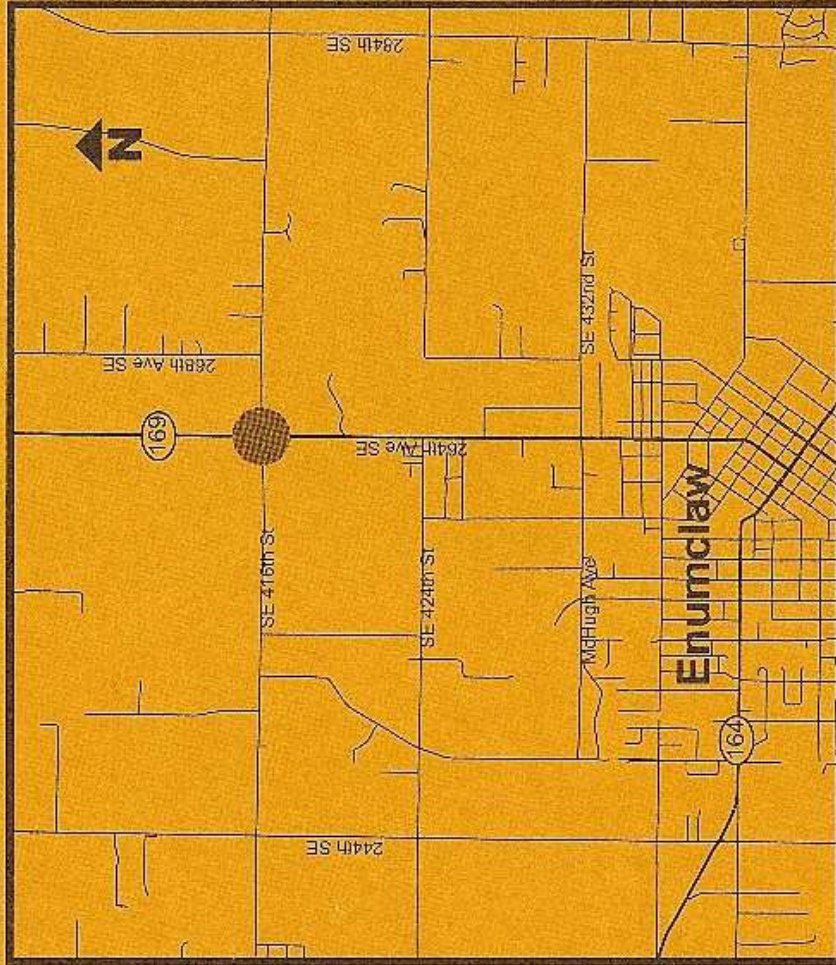
We are exploring improvement options at the intersection of SE 416th Street and SE 284th Street, just north of Enumclaw. These options include a signalized intersection and a modern roundabout.

We invite you to talk to WSDOT experts and learn how these two alternatives will affect your commute. We want your feedback as we move forward with this project.

Get the latest information on this project at an upcoming open house:

**Wednesday, April 25  
2 - 7 p.m.  
Enumclaw Expo Center  
(Fieldhouse and North Parking Lot)  
45224 - 284th Avenue SE  
Enumclaw, WA**

We will provide a full-scale roundabout course in the north parking lot for drivers to test. Experts will be available to demonstrate how to operate a roundabout, or ride along with you so you can see first hand how roundabouts are large enough to accommodate all sorts of vehicles, including semi-trucks, emergency vehicles and buses.



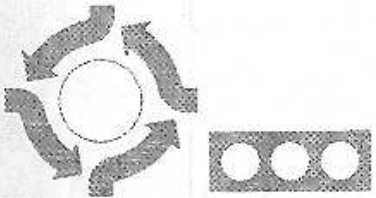
Individuals requiring reasonable accommodations may request written materials in large print, Braille, or other reasonable accommodation by contacting the event sponsor (enter name in insert block). Persons who are deaf or hard of hearing may call the Washington State Department of Transportation (WSDOT) at 800-833-6684, and ask to be connected to the event sponsor's phone number.

**Title VI Statement to Public:** It is the Washington State Department of Transportation's (WSDOT) policy to assure that no person shall, on the grounds of race, color, national origin and sex, as provided by Title VI of the Civil Rights Act of 1964, be excluded from participation in, be denied the benefits of, or be otherwise discriminated against under any of its federally funded programs and activities. Any person who believes his/her Title VI protection has been violated may file a complaint with WSDOT's Office of Equal Opportunity (OEO). For Title VI complaint forms and advice, please contact OEO's Title VI Coordinator at (360) 705-7036.



**Project Facts:**

- The intersection at SE 416th carries approximately 11,500 vehicles a day.
- Between 2001 and 2006, 18 accidents occurred at the intersection; eleven were injury accidents, one was seriously disabling.
- In 2005, the legislature passed a transportation revenue package that included funds to improve the intersection and reduce the risk of collisions.



Project Costs	Roundabout	Signal
Design	\$700,000	\$700,000
Right-of-way/Purchase	\$1 million	\$1 million
Construction	\$2 million	\$1.8 million
Maintenance	\$500/year (illumination)	\$3,000-\$5,000/year

Performance	Roundabout	Signal
Traffic Flow	Free-flowing, 0-10 second delay	Reasonably free-flowing, 10-20 second delay
Accident Severity	Less severe	More severe

**Contact Information:**

[www.wsdot.wa.gov/projects/sr169/416thIntersection](http://www.wsdot.wa.gov/projects/sr169/416thIntersection)  
 Mehrdad Moini, Project Engineer  
 206-440-4312  
 MoiniM@wsdot.wa.gov

Mike Murphy, WSPOT Communications  
 206-440-4699  
 MurphyM@wsdot.wa.gov

**SR 169/SE 416th St.  
Intersection Improvements**

[www.wsdot.wa.gov/projects/sr169/416thIntersection](http://www.wsdot.wa.gov/projects/sr169/416thIntersection)

